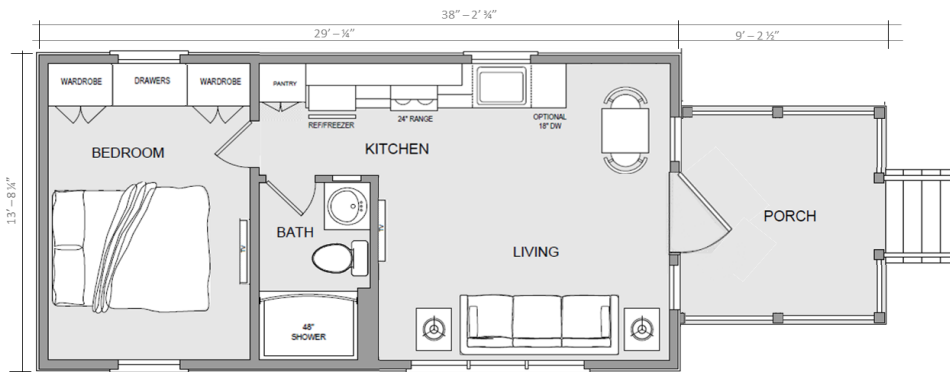


## DOGWOOD

399PM 14-B3 | 1 bedroom, 1 bath | 399 square feet



FOR MORE INFORMATION

STARKVILLE COTTAGES

662.228.7674

### STANDARD FEATURES

- HARDIE LAP SIDING
- THERMAL INSULATED WINDOWS (WHITE)
- TREATED PINE PORCH RAILING
- 90 SQ. FT. PORCH W/ENCLOSED GABLE AND FLAT HARDIE PANEL CEILING
- STAINED PRESSURE TREATED PINE PORCH DECKING
- STAINLESS STEEL APPLIANCES
- SHAKER STYLE KITCHEN AND BATH CABINETS (WHITE)
- CUSTOM-BUILT SHAKER STYLE BEDROOM WARDROBES (2) AND CHEST OF DRAWERS (WHITE)
- GYP BOARD WALLS AND CEILING W/BEAMS
- LED LIGHTING THROUGHOUT
- 125 AMP ELECTRICAL SERVICE
- DUCTLESS MINI-SPLIT HVAC W/REMOTE CONTROL THERMOSTAT
- 2-10 STRUCTURAL WARRANTY

### STANDARD FEATURES

- 3/4 GLASS ENTRY DOOR
- FORMICA COUNTERTOP
- DROP-IN STAINLESS STEEL KITCHEN SINK
- LUXURY VINYL PLANK FLOORING IN LIVING/KITCHEN, BATH AND BEDROOM
- BRUSHED NICKEL CEILING FANS (2) IN LIVING/KITCHEN AND BEDROOM
- BRUSHED NICKEL VANITY LIGHT FIXTURE IN BATH
- BRUSHED NICKEL KITCHEN AND BATH PLUMBING FITTINGS
- BRUSHED NICKEL DOOR LEVERS
- BRUSHED STAINLESS STEEL CABINET PULLS

### OPTIONS AND UPGRADES

- CORRUGATED METAL ROOF
- 48" CUSTOM TILE SHOWER

\* SALES TAX, DELIVERY, AND SET-UP NOT INCLUDED